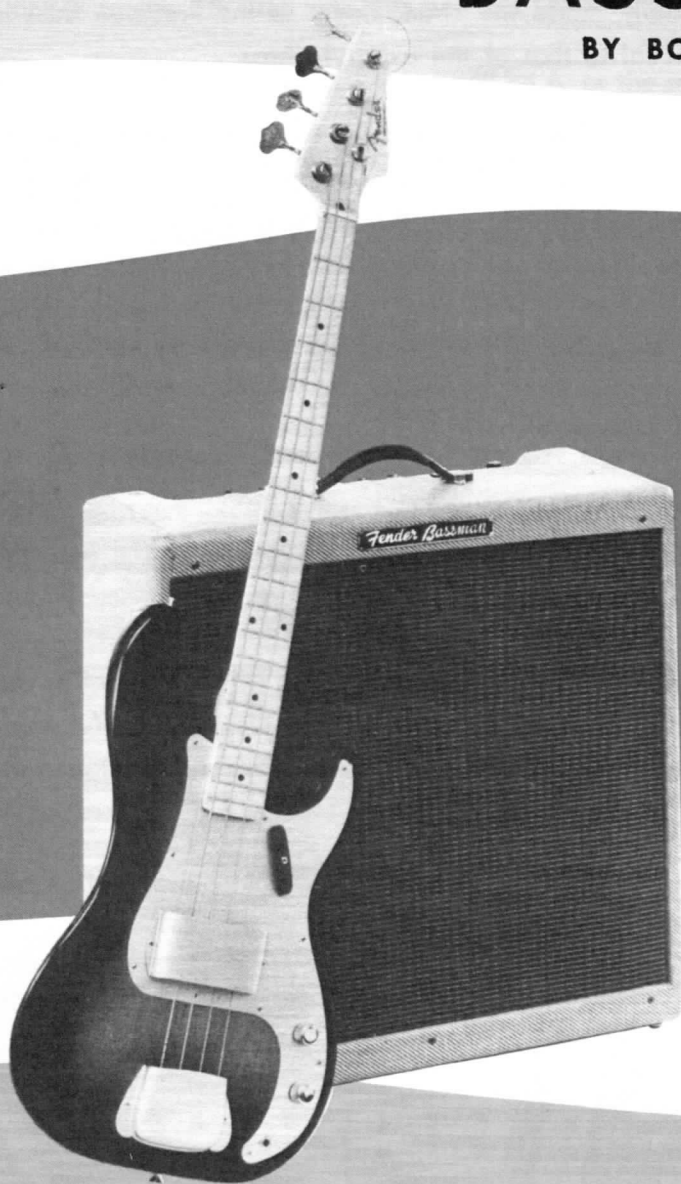


INSTRUCTION MANUAL

*Fender*

# PRECISION BASS

BY BOB DAYTON



*Fender*

FINE ELECTRIC INSTRUMENTS

DISTRIBUTED BY

Fender Sales, Inc. • 308 E. Fifth Street

Santa Ana, California

## FENDER PRECISION BASS

This Precision Bass Instrument Manual offers fundamentals and playing techniques helpful to every musician. It is pointed out in this manual that the guitarist, with his knowledge of harmony and chords, will find playing the Precision Bass easy and guitar music used to good advantage as a bass part.

Bassmen have readily made the change-over to the Precision Bass inasmuch as its range and fingering are identical to that of the old style bass.

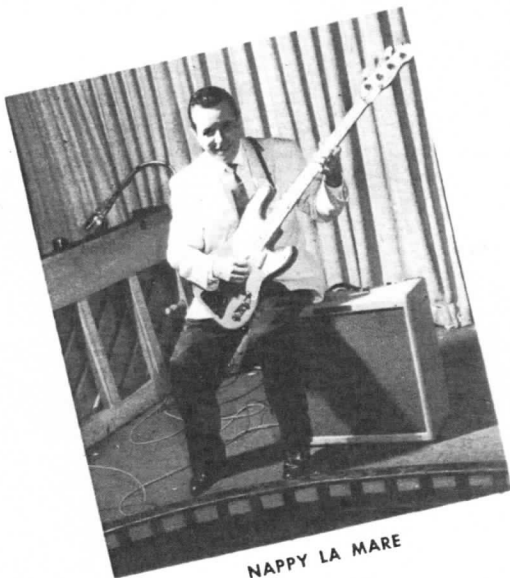
Since the introduction of the Fender Precision Bass, it has become a part of the instrumentation of many of the nation's leading musical organizations. Both bassmen and guitarists have found their technique improves very rapidly with this instrument and play considerably more difficult work than ever before.

With the Precision Bass, only light finger action is necessary for fretting and picking. Greater volume is attainable with little effort by use of the volume control, and tonal variations may be achieved with the tone control.

Also appreciated by bassmen is the fact that with the Precision Bass you are able to move around freely while playing; the over-all bulk is considerably less than the old type bass, providing convenience and portability.

The following material, though elementary and brief, is meant to show the ease and flexibility with which the Fender Precision Bass can be played. Careful study of its contents will enable you to more fully appreciate the remarkable playing advantages of this instrument.

**FENDER SALES, INC.**



NAPPY LA MARE



BOB MANNERS

Because of the fact that many guitarists as well as bassists will be playing the Precision Bass, it is only proper that consideration be given both the clef signs, Bass and Treble, as you will soon see that reading bass parts can be accomplished by using either clef.

It will be found that when the Bass is in the proper playing position, the low or 4th string will be nearest the player, and to avoid any confusion we will start with the 4th string, advancing to the 1st or highest string in the examples to follow.

Fingering the Bass with the left hand, use this rule: fingers and frets corresponding. As example, 1st finger on 1st fret (between frets of course), 2nd finger on 2nd fret, 3rd finger on 3rd fret, 4th finger on 4th fret and in this open and first position, slide 4th finger to include 5th fret.

Sliding the 4th finger to the 5th fret will give you the same tone and note as the next open string.

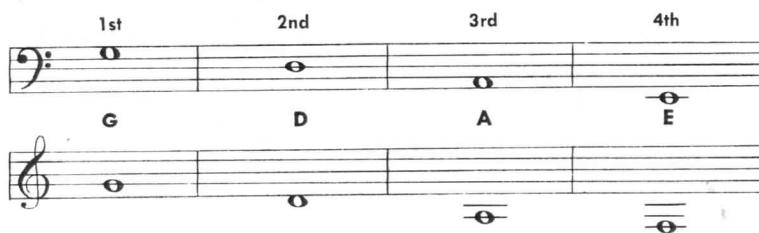
For example, the 5th fret of the 4th or low string will be A, or the same tone and note as the open 3rd string.

In picking the Precision Bass, use the thumb of the right hand, or if preferred, a plectrum of medium to heavy weight felt may be used.

At a further and advanced stage of Electric Bass study, and, where speed and agility is desired, the use of the 1st and 2nd fingers of the right hand can be employed to great advantage.

Above all things remember the old saying, "easy does it" and try to be relaxed at all times, which is the best advice anyone can apply to the Precision Bass as well as any musical instrument.

#### Open strings of Bass Showing both clef signs.



	E	A	D	G
	4	3	2	1
1st FRET				
2nd FRET				
3rd FRET				
ETC.				

Fingerboard showing open strings  
O — Denotes an open string.

Remember: finger and fret correspond, 1st finger — 1st fret, etc.

	4th STRING			3rd STRING			2nd STRING			1st STRING		
	E	F	G	A	B	C	D	E	F	G	A	B
FINGER AND FRET	0	1	3	0	2	3	0	2	3	0	2	3
	4th STRING			3rd STRING			2nd STRING			1st STRING		

Above are open position notes shown with fingerings in both bass and treble clef.

Practice example using open (O) strings only (both clefs).



4	3	2	1	STRING NUMBER
O	O	O	O	OPEN STRING SIGN
E	A	D	G	NAME OF STRING

F	1			
		B 2	E 2	A 2
G	3	C 3	F 3	
				B 4

Chromatic, or the inclusion of half steps, sharps (#) and flats (b), to the above open position notes.

In ASCENDING FINGERBOARD THE HALF STEPS ARE NAMED IN SHARPS

	O	E	A	D	G
1 F		A	D		G
2 F		B	E		A
3 G		C	F		A
4 G		C	F		B

IN DESCENDING FINGERBOARD THE HALF STEPS ARE NAMED IN FLATS

Now, by referring to the chromatic fingerboard (outlined) try this bass part — the key selected is key of G, which has as its signature one sharp (#). The note F is played F# to properly complete the scale and harmonic structure of this particular key.

Note: In the third measure, or bar, the note G is played G# (1st finger on 1st string).

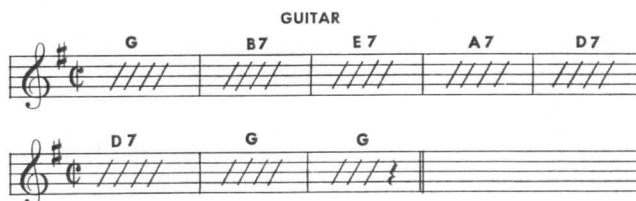
BASS CLEF



TREBLE CLEF

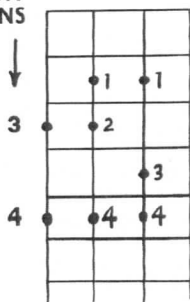


The above bass part is written from guitar part.

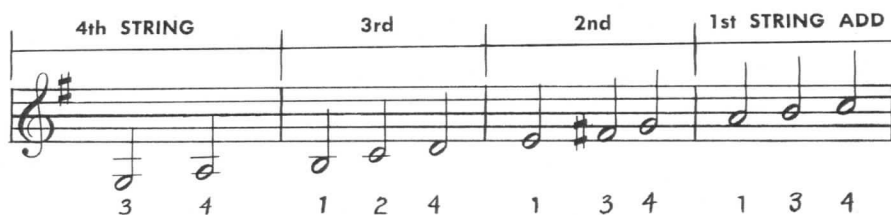


The first finger of the left hand will designate what position you will actually be playing. For example, in fingering the G scale (as illustrated) you will notice that the first finger is engaged on the second fret, thus, this will be considered as the second position.

2nd FRET, 2nd POSITION  
AS 1st FINGER GOVERNS  
POSITION

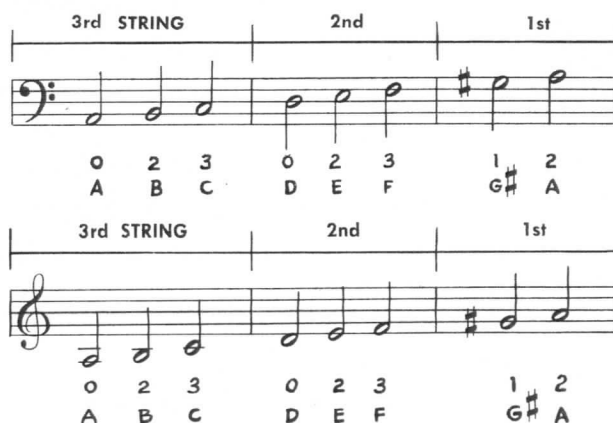


## G MAJOR SCALE



After trying and playing the G scale above, move your hand position down the finger-board one fret; now by playing the same scale, same fingering, you will find you are in the key of G#, or Ab as it is more commonly known.

Notice also your first finger is engaged at the 3rd fret (3rd position) in the key of Ab. In key of A, your 1st finger will be on the 4th fret, etc., ascending and descending the finger-board. This is a very important fingering position and is invaluable to the electric bass.



ALSO DESCEND A MINOR SCALE

Each major key has a "relative minor key," which is found by counting up six notes of the major scale; as example, in the major key of C, which has no sharps or flats, the sixth tone or note is A, thus A minor is the relative minor of the key of C.

The relative minor keys retains the same key signature as the major key from which it is derived.

The most popular and widely used relative minor scale is the harmonic minor scale, formed by raising the seventh note one half step, as in the case of A minor the note G is raised to G#.

## SUMMARY

From a guitarist standpoint, with his knowledge of harmony and chords, the switchover to Precision Bass should be an easy one, and, as a matter of fact, a guitar part may be used to good advantage as a bass part.

Keep in mind the root or name note of the chord and the fifth of the chord are to be the strongest notes to alternate in playing a bass part. Of course the third note is also used though it may represent the weak note of the chord.

For example, in the key of C, alternate root note C to G, or fifth note of the chord, adding the note E or third as desired, but at the same time being careful not to be repetitious of the third.

A very brief but important run down of harmony and chord construction, using the key of C as example is as follows:

To form a major chord take the 1-3-5 notes of the major scale.



A minor chord is formed by taking the 1-3 $\flat$ -5 notes of major scale.

An augmented chord is formed by taking the 1-3-5 $\sharp$  notes of the major scale.

A sixth chord is formed by taking the 1-3-6 notes of major scale (add the 5th in open voice).

A seventh chord is formed by taking the 1-3-5-7 $\flat$  notes of major scale.

A major seventh chord is formed by taking the 1-3-5-7 ( $\natural$ ) notes of major scale.

A diminished chord is formed by taking the 1-3 $\flat$ -5 $\flat$ -6 notes of major scale (also known as diminished seventh chord).

A ninth chord is formed by taking the 1-3-5-7 $\flat$ -9 notes of major scale.

A thirteenth chord is formed by taking the 1-3-5-7 $\flat$ -9-13 of the major scale.

In any other key, excluding the key of C, sharps and flats are found in the key signature of the scale as well as the chord to be formed.

In some instances, a sharp sign has to be cancelled in forming a chord, or it may be the case where a flat sign will become natural in forming a chord from a flat key signature.

With strict adherence to the rules it will be impossible to make errors in forming chords.

In conclusion, a good rule to follow is this: be sure of your key signatures and the accidentals, which are the sharps and flats sign as shown, before beginning to play.

Chord symbol abbreviations using key of C as example:

C = C major chord

C  $\flat$  or Cm = minor chord

C 6 = sixth chord

C 7 = seventh chord

C maj 7 = major seventh chord

C $^\circ$  or C dim = diminished chord

C+ or C Aug. = augmented chord

C 9 = ninth chord

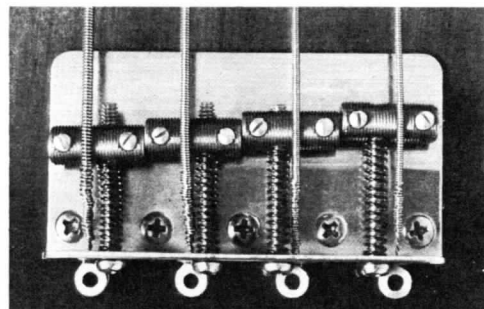
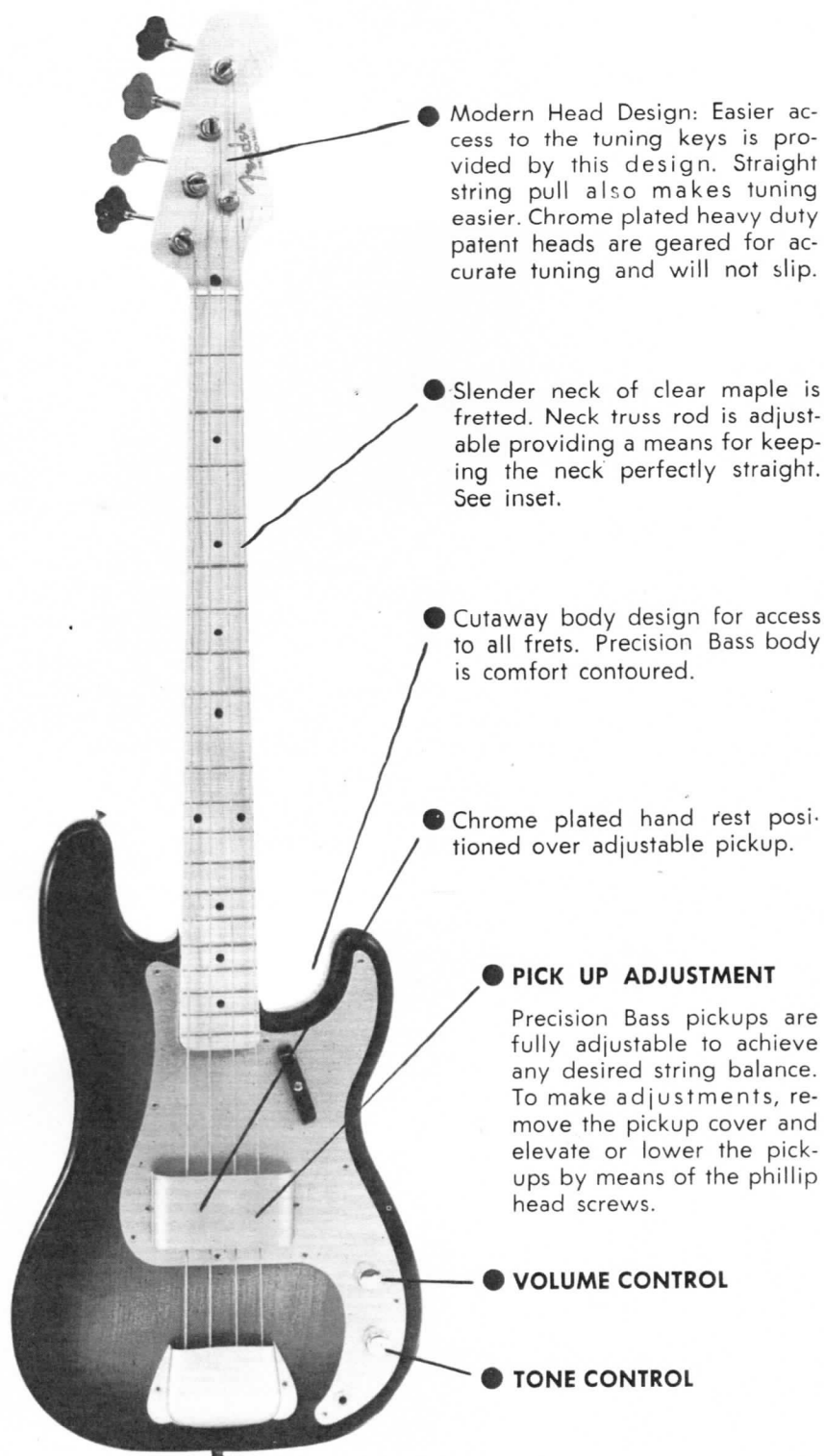
C 13 = thirteenth chord



The new four string Precision Bass is one of the most revolutionary instruments to make an appearance in many years. It is the answer to every bass player's desire for a portable instrument of extremely fine tone quality, plus playing ease and comfort.

This remarkable instrument is infinitely easier to play than a conventional bass inasmuch as the technique is like that used in playing a guitar. Very little string action is required to obtain full rich bass volume, thereby eliminating the effort that went into playing the old style bass.

The neck of this instrument is slender and fretted, and the string adjustment is close to the frets enabling the player to play with greatly increased speed.



**Micro-Adjustable Bridges:** These new individual string bridges are located under the bridge cover. String length and string height of each string may be individually adjusted, providing for proper noting and finest action for every position.

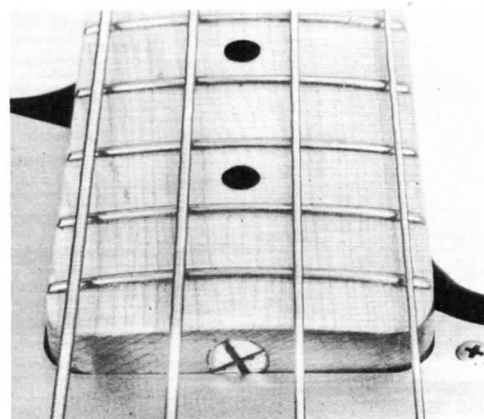


Photo shows adjustable tension rod which reinforces the slender fast-action neck. This rod maintains level frets at all times, and prevents warping.

Available as an accessory is a fine molded plush lined case, covered in finest quality airplane luggage linen, or a padded plastic leather bag with accessory pockets and zipper closing.

INSTRUCTION MANUAL

*Fender*

# PRECISION BASS

BY BOB DAYTON



*Fender*

**FINE ELECTRIC INSTRUMENTS**

DISTRIBUTED BY

Fender Sales, Inc. • 308 E. Fifth Street

Santa Ana, California