

## ZK-3002 TPA3255 纯后级数字功放板

温馨提示：该型号产品电解电容处于由黑金色向金色更换的过渡期，您购买的产品电解颜色如果存在和产品说明书图片不一致的情况，属正常现象，请您放心使用。

Reminder: The electrolytic capacitor of this model is in a transitional period from black gold to gold. If the electrolytic color of the product you purchased does not match the product manual picture, it is a normal phenomenon. Please feel free to use it.



## 目录

ZK-3002 TPA3255 纯后级数字功放板.....	1
目录 .....	2
谨防假冒 .....	3
产品优势 .....	4
产品细节 .....	5
产品功能 .....	6
桥接功能 .....	7
产品参数 .....	8
产品尺寸 .....	9
产品背面 .....	10

## 1. 谨防假冒

# 谨防假冒

凡是不带以下标志的产品均为盗版



风扇有版权标志



正品散热片倒角, 拉丝工艺, 有激光刻字WUZHI AUDIO商标



请认准WUZHI AUDIO  
商标标志



每一颗大电容都有  
WUZHI AUDIO商标

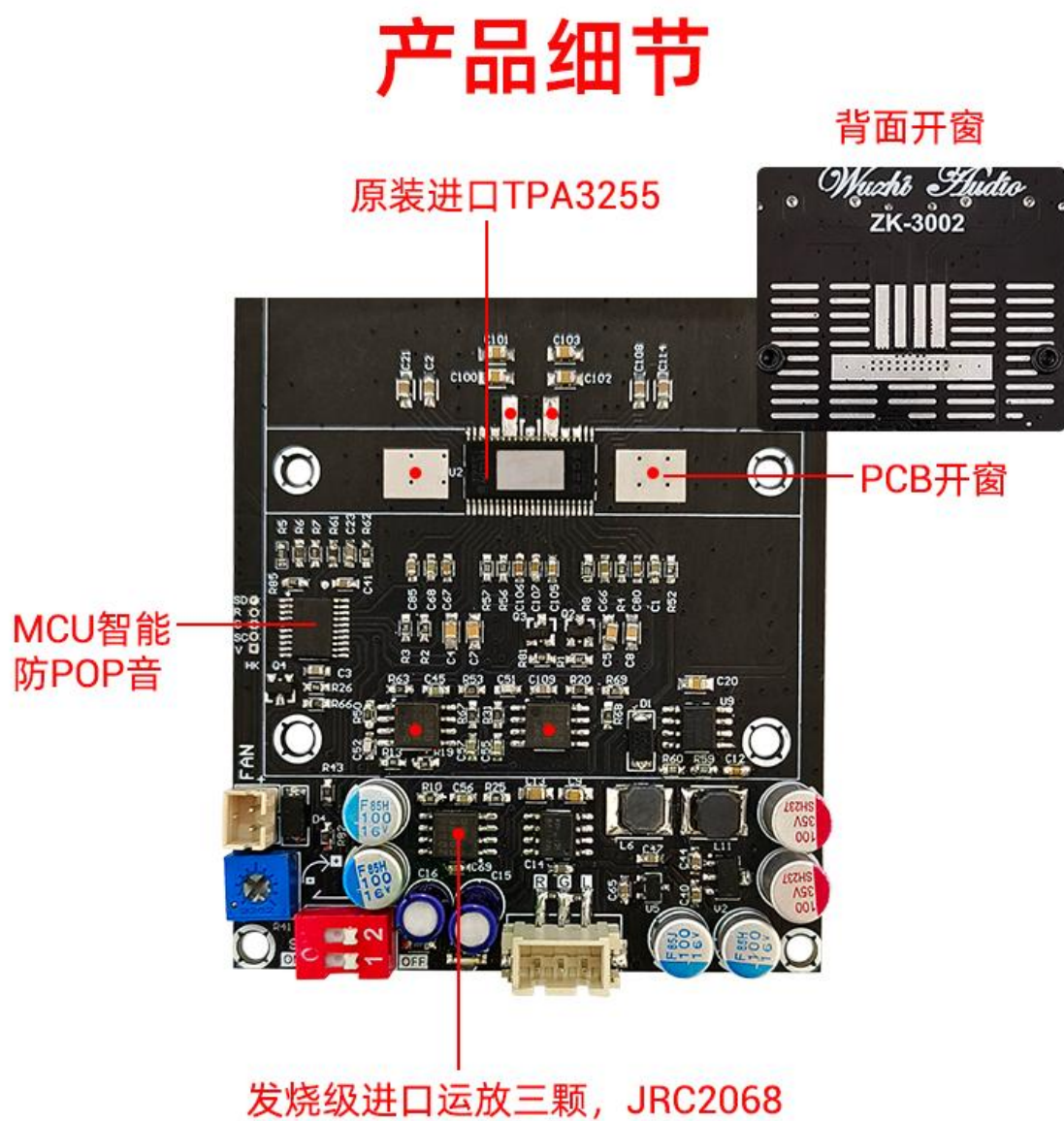
## 2. 产品优势

### 产品优势



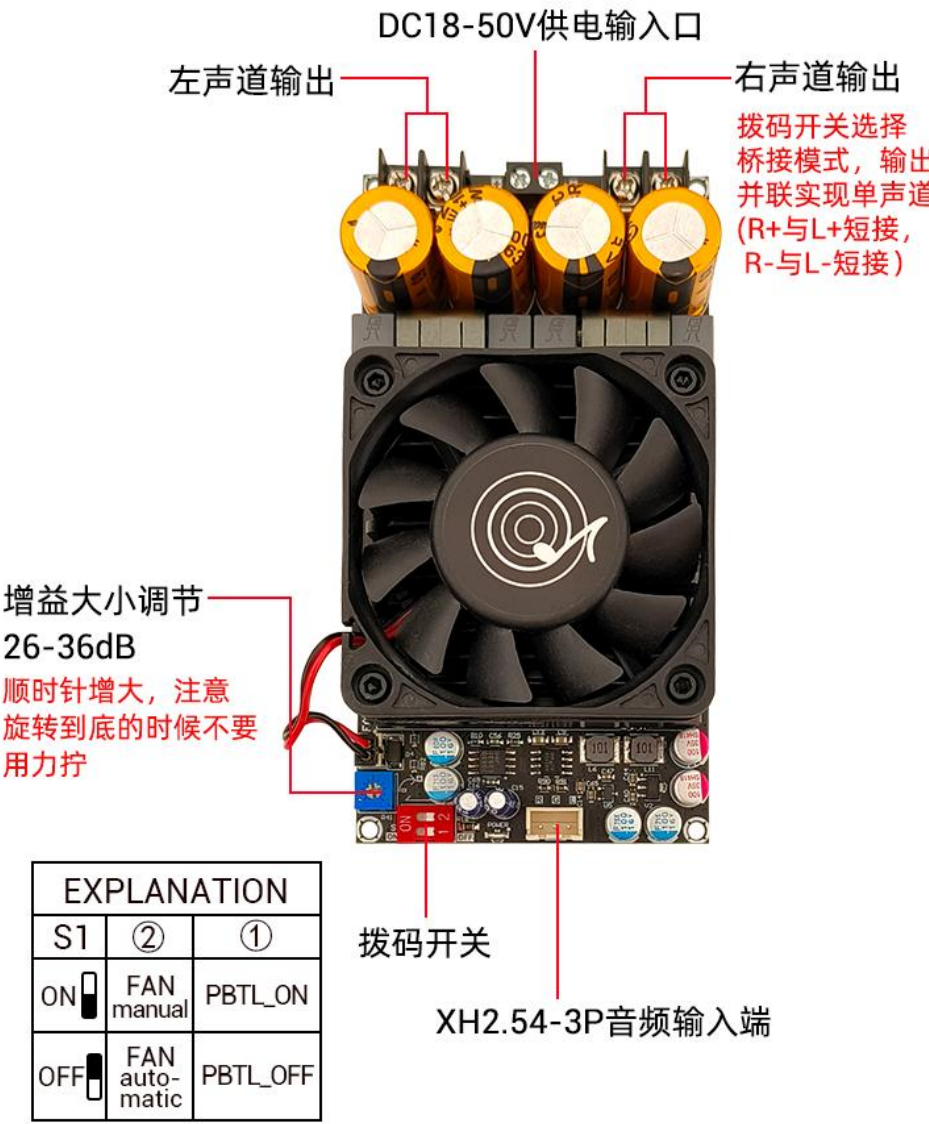


### 3. 产品细节



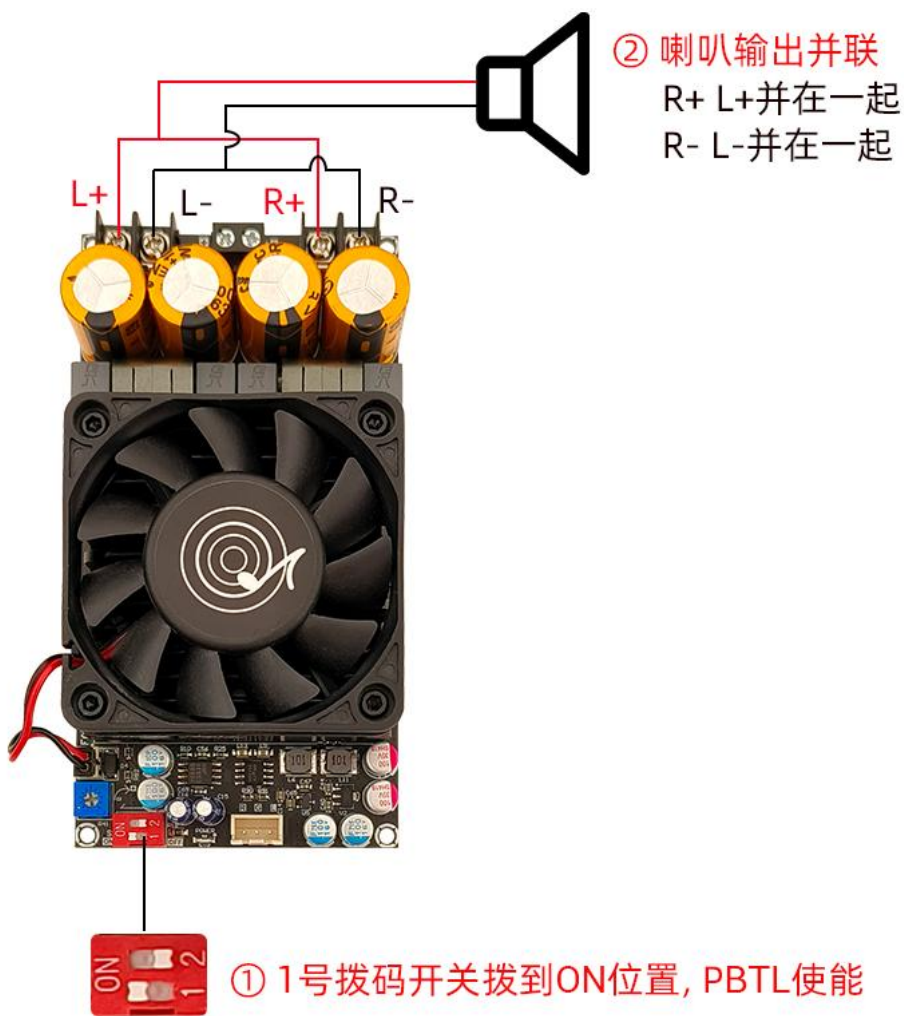
# 4. 产品功能

## 产品功能



## 5. 桥接功能

### 桥接功能



先断电再执行桥接操作。

PBTL模式下默认左声道音频输入, 也可以同时接左右声道。  
可以调节电位器改变模块增益大小。

## 6. 产品参数

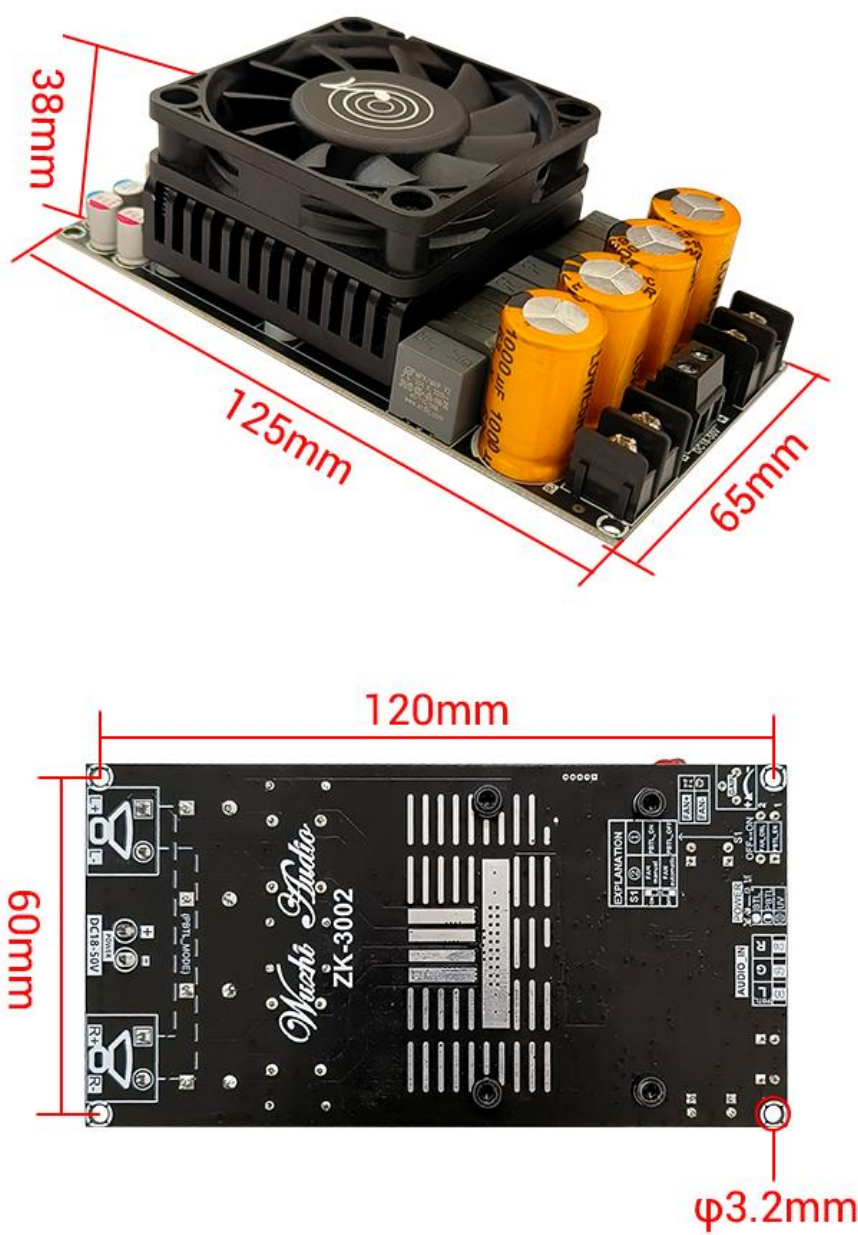
### 产品参数

产品名称	300W双声道/600W单声道纯后级功放板
功放芯片	原装TPA3255
产品型号	ZK-3002
适配电源	工作电压范围18-50VDC，极限53V。推荐使用电压36-48V，电流10A以上的直流电源。电压越高，可输出功率越大。
适配喇叭	BTL双声道模式下3-8欧姆，50-300W； PBTL单声道模式下2-8欧姆，100-600W
散热方式	温控自动风冷，或手动选择风扇一直转。
增益选择	电位器10档调节，26dB-36dB
桥接方式	先断电，1号拨码开关拨到ON位置，输出端R+ L+短接并联输出，R- L-短接并联输出。
最大功率	BTL模式下，2*300W@50V 4Ω，160W@50V 8Ω； PBTL模式下，600W@50V 2Ω，300W@50V 4Ω， 160W@50V 8Ω
保护机制	输入欠压，过热，过流，短路保护。 无输入防反接保护，正负极不能接反！
产品尺寸	125x65x38mm
产品重量	产品净重: 254g 含包装重量: 289g



## 7. 产品尺寸

### 产品尺寸



## 8. 产品背面

# 产品背面



# ZK-3002 TPA3255 pure rear stage digital power amplifier board

## TPA3255 pure rear stage power amplifier board

One click bridging

Temperature controlled fan

MCU intelligent anti POP sound

With pre amplifier, 26-36dB gain adjustable



Bridging single circuit 600W  
Dual 300W+300W

## Catalogue

ZK-3002 TPA3255 pure rear stage digital power amplifier board .....	11
Catalogue .....	12
Beware of imitations .....	13
Product advantages .....	14
Product details .....	15
Product function .....	16
Bridging function .....	17
Product parameters .....	18
Product size.....	19
Back of the product .....	20



## 1. Beware of imitations

# Beware of imitations

Any product without the following markings is considered pirated



The fan has a copyright logo



Authentic heat sink chamfering, wire drawing process, with laser engraved WUZHAI AUDIO trademark



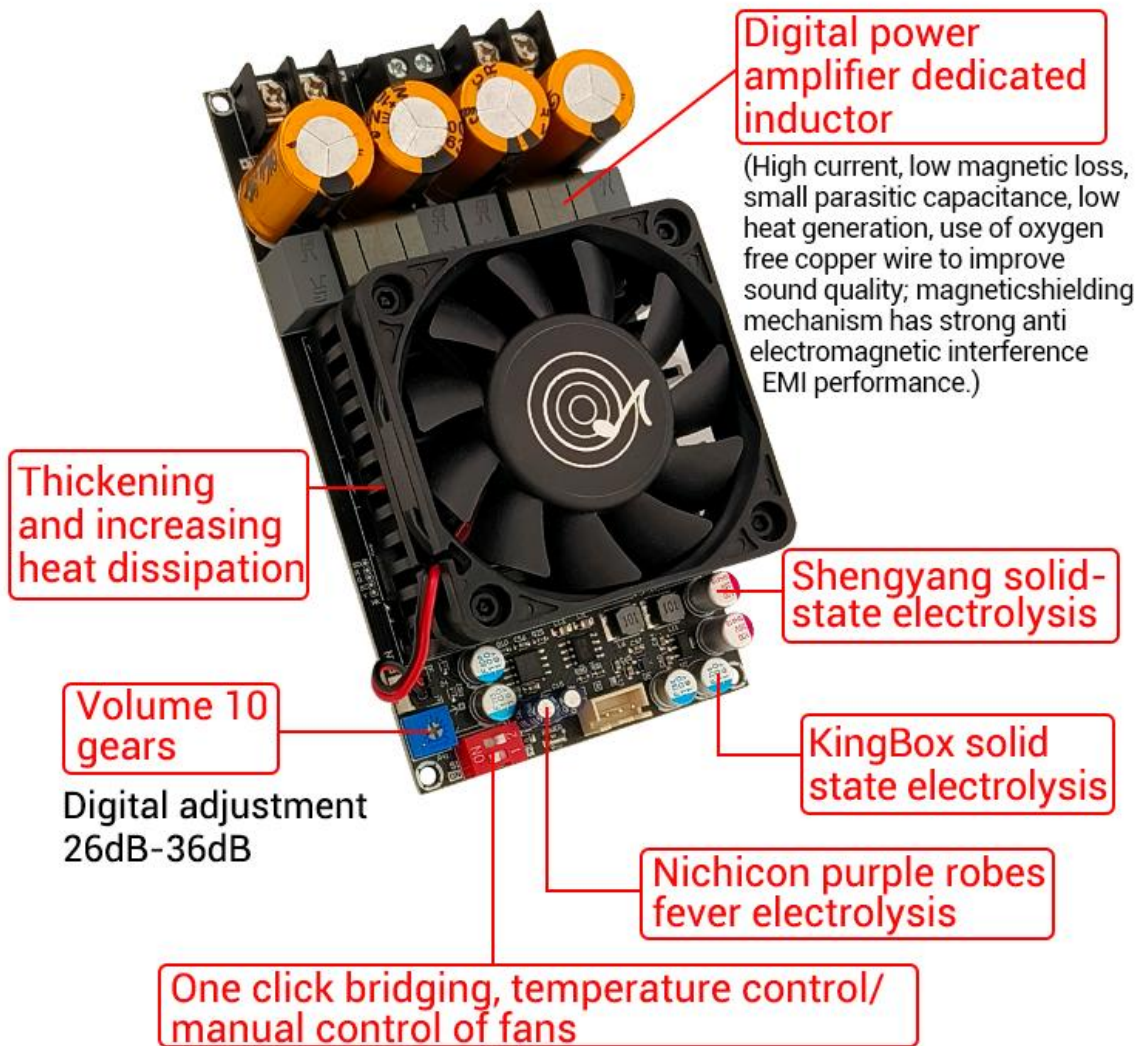
Please identify the WUZHAI AUDIO trademark logo



Each large capacitor has the WUZHAI AUDIO trademark

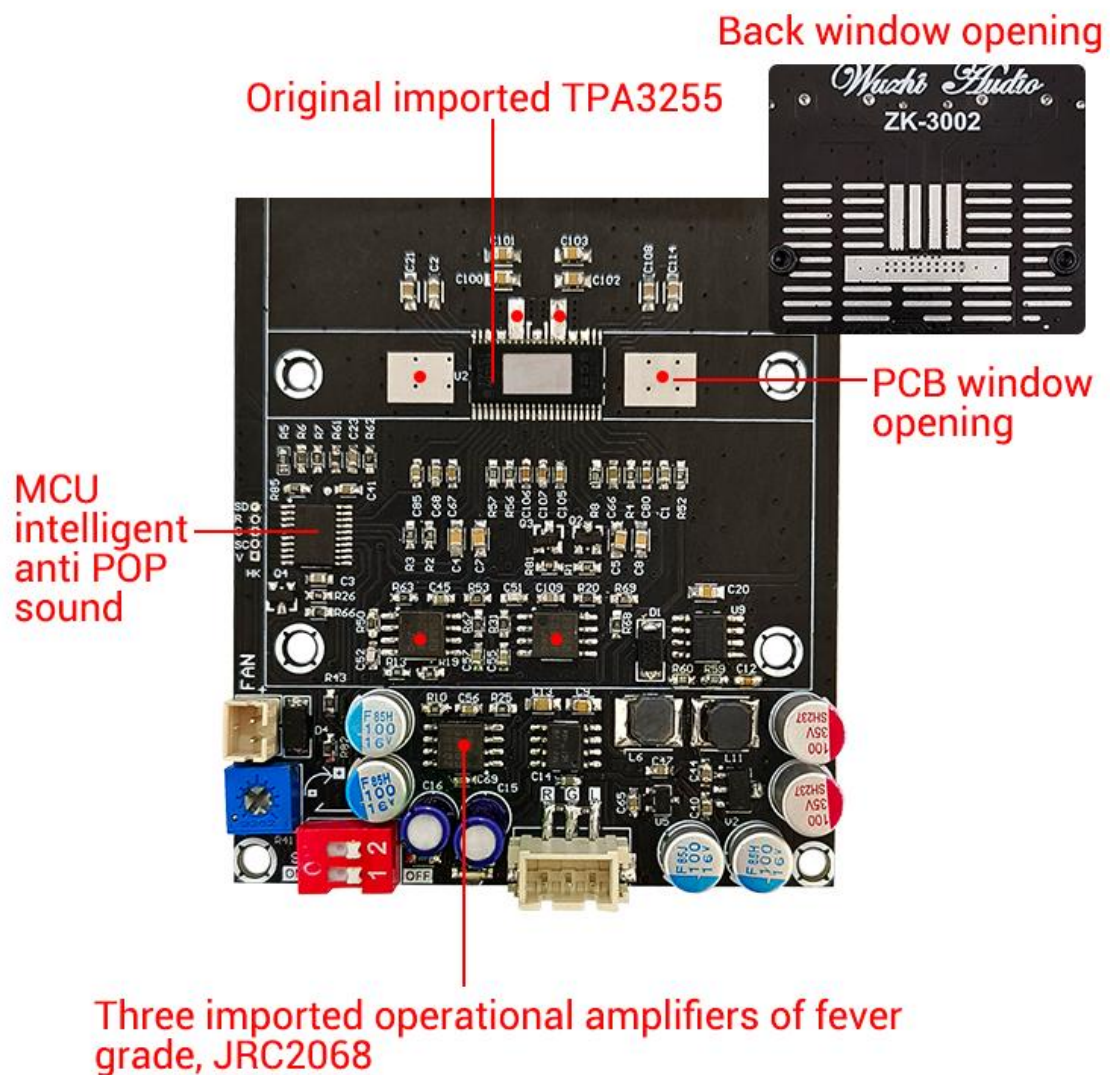
## 2. Product advantages

# Product advantages



### 3.Product details

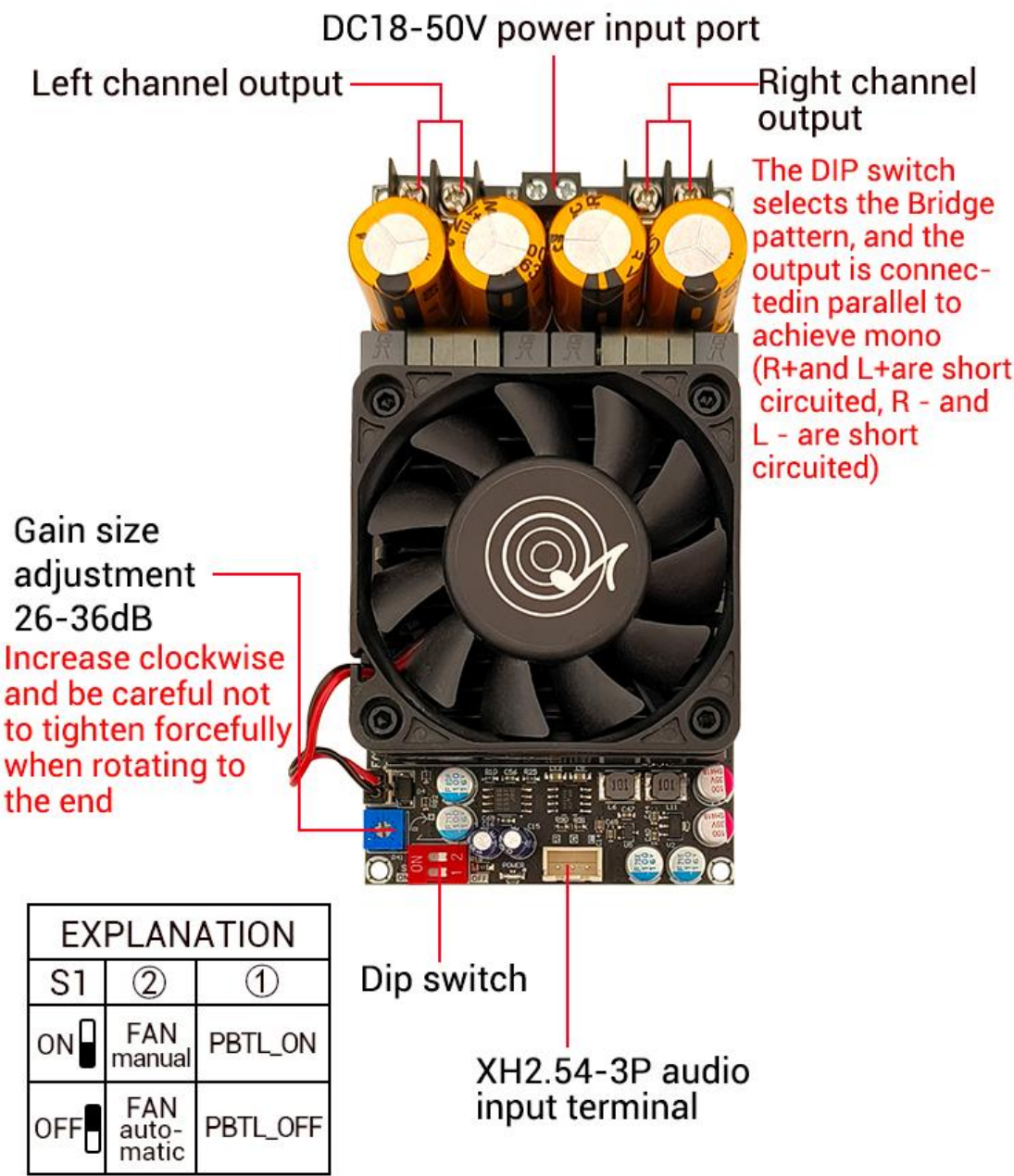
## Product details





# 4.Product function

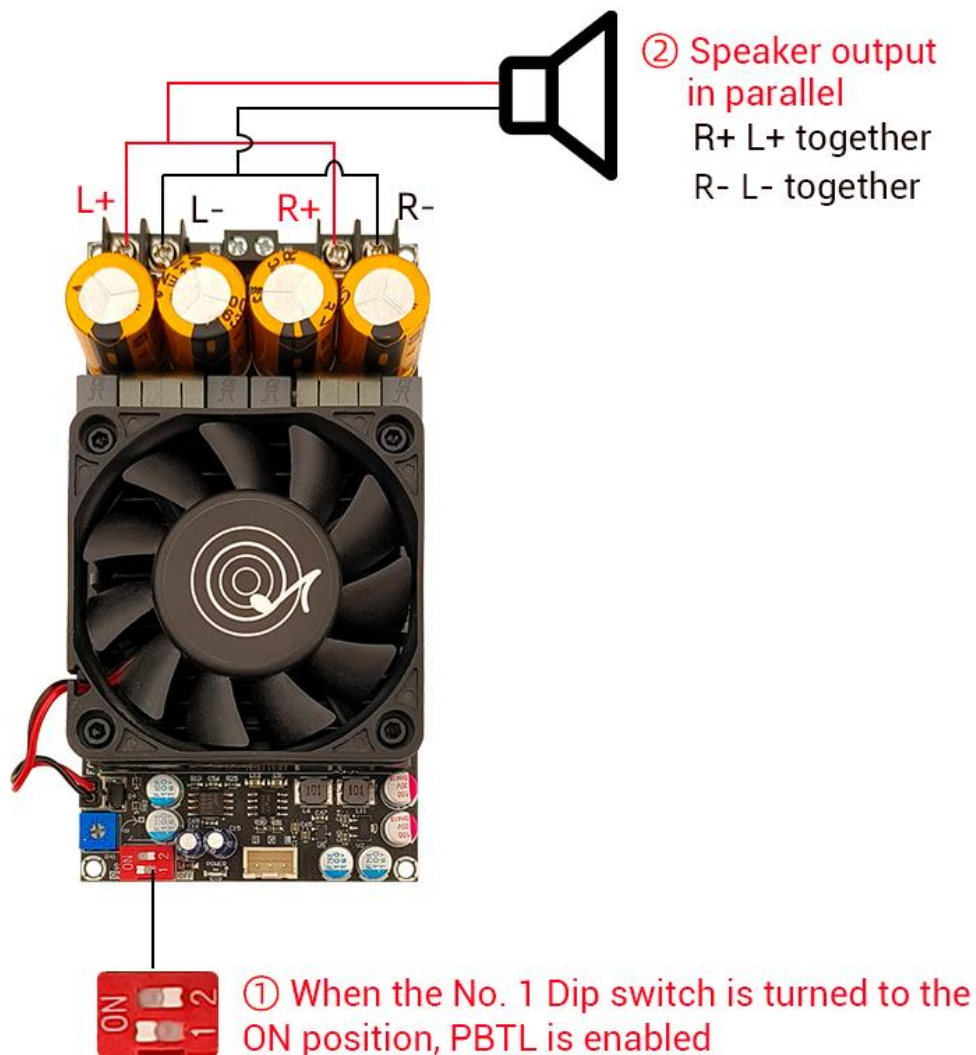
## Product function





## 5. Bridging function

### Bridging function



**Power off before performing the bridging operation.**

In PBTl mode, the default left channel audio input can also be connected to both left and right channels simultaneously. You can adjust the Potentiometer to change the module gain.

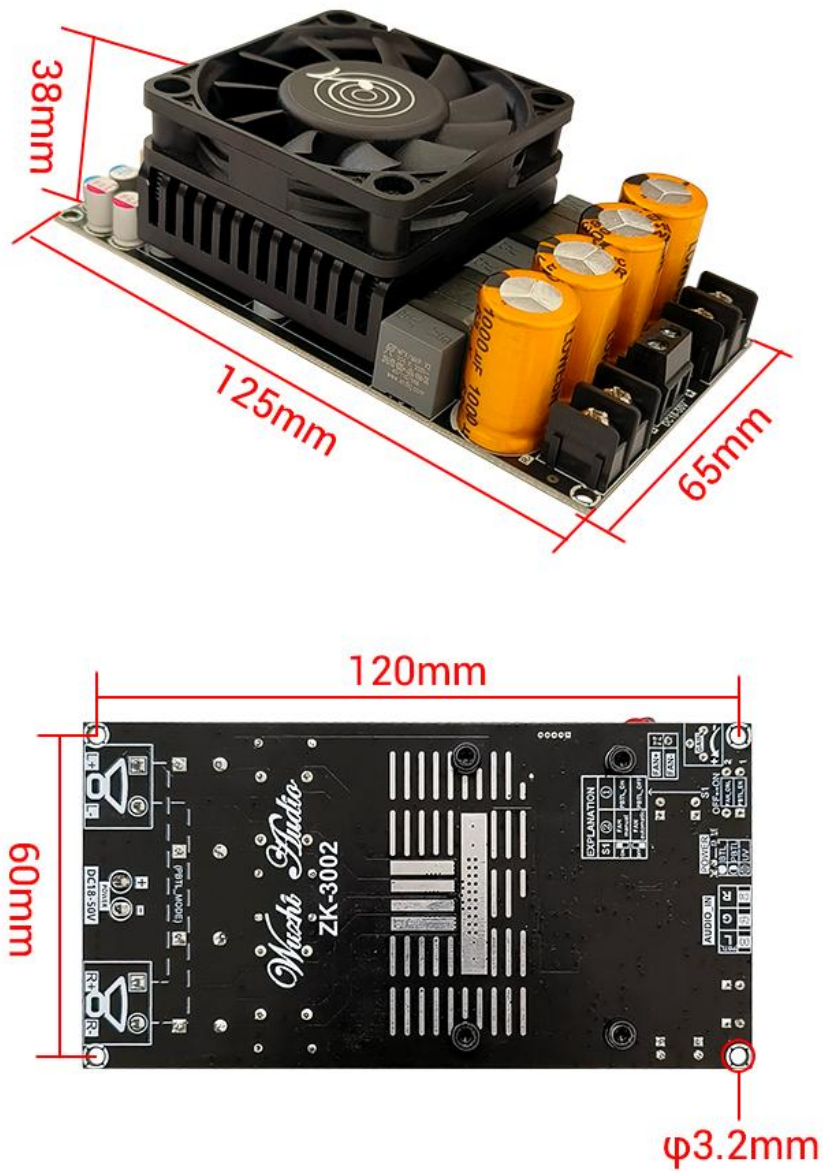
## 6. Product parameters

### Product parameters

Product name	300W dual channel/600W mono pure rear stage amplifier board
Power AMP chip	Original TPA3255
Product model	ZK-3002
Adapted power supply	The working voltage range is 18-50VDC, with a limit of 53V. It is recommended to use a DC power supply with a voltage of 36-48V and a current of 10A or more. The higher the voltage, the greater the output power.
Adapted speaker	3-8 ohms, 50-300W in BTL dual channel mode; 2-8 ohms, 100-600W in PBTL mono mode
Heat dissipation method	Temperature controlled automatic air cooling, or manually selecting the fan to keep running.
Gain selection	Potentiometer 10 gear adjustment, 26dB-36dB
Bridging method	Turn off the power first, turn the No.1 dial switch to the ON position, and the output end R+L+ is short circuited in parallel for output, while R - L - is short circuited in parallel for output.
Maximum power	In BTL mode, 2*300W@50V 4Ω, 160W@50V 8Ω; In PBTL mode, 600W@50V 2Ω, 300W@50V 4Ω, 160W@50V 8Ω
Protection mechanism	Input undervoltage, overheating, overcurrent, short circuit protection. No input anti reverse protection, positive and negative poles cannot be reversed!
Product size	125x65x38mm
Product weight	Net weight of product: 254g Weight with packaging: 289g

## 7. Product size

### Product size



## 8. Back of the product

# Back of the product

