

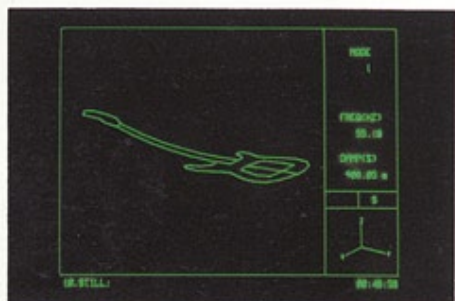
**'83 '84  
ELECTRIC  
BASS  
GUITARS**

***Ibanez***

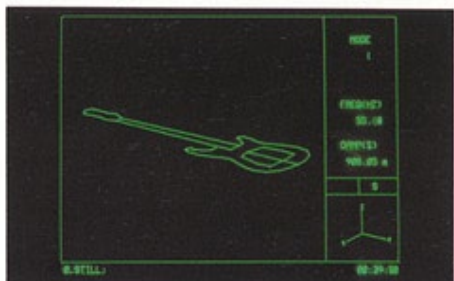


Over the past several years the R & D group at Ibanez has been conducting exhaustive research on the elements that make great sounding, responsive electric guitars and basses. Advanced computer analysis, developed by the engineers at Ibanez, has revealed a wealth of new information regarding the materials and construction of truly superlative instruments.

It is commonly known that the bridge, nut, pickups and strings are important factors in sound definition. Other factors, such as body shape and size, weight and materials, are often left to chance, or at best, to design style and material availability. It is precisely these "other factors" that differentiate good instruments from great ones. Ibanez research has shown that elements of body design affect the basic vibration modes of an instrument. The vibration modes, in turn, directly affect the instrument's sound and playing response. When all of the design elements are optimized the instrument virtually "comes alive".

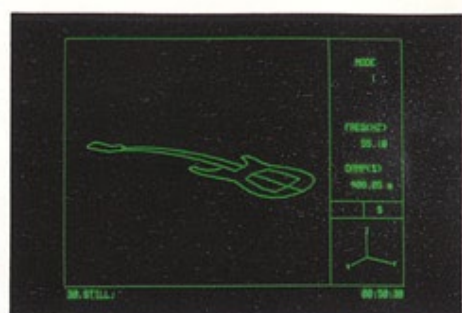


When any one or more of these elements are off, the instrument becomes dull, falling short of its full potential. A well designed instrument should have its vibration modes distributed throughout its frequency range. This makes the instrument responsive across the entire tonal spectrum. The modes should be even in amplitude for a balanced sound. Finally, the modes should not interfere with each other, creating areas of weak response or unclear sound. The modes should compliment each other allowing the full-range vibrating power of the instrument to ring true.



Extensive vibration analysis has revealed that body shape, size, material and weight, along with neck and headstock mass, all contribute to an instrument's unique vibration patterns. Moreover, these contributions are interactive and must be "tuned" to each other for optimum performance.

The following computer images illustrate the basic vibration modes of Ibanez electric bass guitars. After excitation the body goes through its vibration modes in the following



sequence: ①, ②, ③, ②, ①, ②...etc. until all vibration decays. The vibration modes are identified in this manner and information regarding their resonant frequency, relative amplitude, decay characteristics and interaction are obtained. The images shown here were generated on the Structure Dynamic Analyzer developed at Ibanez. Computer-aided research, such as the tests on the Structure Dynamic Analyzer, has provided Ibanez with valuable insight into the vibration potential of many types of electric guitars and basses. As a result, Ibanez has been able to optimize the design of each guitar and bass, assuring that each Ibanez instrument is built to realize its full potential.

# ELECTRIC BASS GUITARS

*Music is changing all the time, consequently the demands musicians make of their instruments are also constantly changing. In the midst of all this rapid movement, it's easy to see how a large company might lose sight of its initial commitment to meet those demands and further the state of the art. At Ibanez, however, the spirit of commitment to today's player continues to live on as evidenced by the instruments seen in this catalog.*

*Both the Musician and the newly designed Roadstar II series are a reflection of the extreme pride and care that go into all Ibanez fretted instruments. As you go through this catalog you will notice many new ideas that have been applied to these lines. Some of these innovations occur in electronics or hardware, while others pertain to overall construction. Each and every change has been carefully contemplated and tested to insure you complete satisfaction. Whatever your needs are in a bass, we're sure that you'll find them fulfilled with an Ibanez.*







**IBANEZ FRIENDS**



Alex Blake



Phil Lynott  
(THIN LIZZY)



John McVie  
(FLEETWOOD MAC)



Sting  
(THE POLICE)



Mike Porcaro  
(TOTO)



Victor Bailey







MC824DS

MC940DS

MC924PW

**MUSICIAN BASS**





The 1983 line-up once again proves why Ibanez MUSICIAN basses are rapidly becoming one of the most popular lines of fretted instruments around. Their unique b design and advanced electronics provide an incredibly varied array of exciting sounds and the playability of today's finest instruments.

A steel bar embedded within the ultra-slim "tuned response" neck of MUSICIAN basses guarantees that its fretboard will be free of any hot or dead spots. All MC models utilize neck-through-body construction for structural rigidity and tonal richness. The lightweight contoured body design makes the MUSICIAN bass perfect for long hours of comfortable playing.



## MC824

The MC824 features the Ibanez Super J6 pickup for a wide range of distinctly new sounds from clean lows to crystal clear highs. The J6 pickup uses four individually shielded coils, fully adjustable pole pieces, specialized magnet alloys and the Ibanez TRI-SOUND coil selection system.

## MC924 and MC940

The MC924 and MC940 basses feature an active three-band EQ System and the newly developed pickup balancer. Topped off with Ibanez SUPER PSS and J5S pickups, the MC924/940 electronics system provides a powerful range of sounds from deep and round to hot and overdriven.

## VELVE TUNE BII MACHINE HEAD

The VELVE TUNE BII is light weight for a balanced-feel instrument. The large post design makes stringing easy. Post rotation is smooth with no snap-turning or back-rush. The 21:1 turn ratio provides pinpoint tuning accuracy.



## BALANCED COMFORT

The slim neck runs the entire length of the instrument for increased sustain and response and the smoothly contoured ash body hugs your body and balances perfectly.

## EQ B TONE SYSTEM

The EQ B Tone System has become a musician's favorite because of its simplicity and wide tonal possibilities. Boost and cut control is available in three distinct frequency bands to let you tailor the sound until it's just perfect. The new pickup balancer works like a pan pot on a mixing console, allowing you to blend the pickups together with one simple control.

## SUPER PSS/J5S PICKUPS

These high performance pickups have a balanced output to give you a smooth transition from a full and deep tone to crisp snapping treble. The special shielding and mounts virtually eliminate hum and mechanical noise.



## THE NEW SUPER J6 PICKUP

The Super J6 pickup features four fully shielded coils for studio-quiet performance and adjustable pole pieces for a balanced sound. The coils may be arranged for series humbucking, parallel-humbucking and single-coil operation. The special alloy steel magnet provides clean lows, punchy mids and clear highs.



## 24 FRETS

Bassists have long been limited by the standard 20-fret bass configuration. Ibanez changed all that with the 24-fret Musicians. The special body design balances extremely well even with this extended playability.

## CONTROLS

### MC824

- 1 Volume
- 2 Tone
- 3 Tri Sound



### MC924, 940.

- 1 Pickup Balancer
- 2 Master Volume
- 3 Master Tone
- 4 EQ On/Off Switch
- 5 EQ Tone Bass
- 6 EQ Tone Middle
- 7 EQ Tone Treble



	MC824	MC924, MC940
Body:	Ash	Ash
Neck:	Maple & Walnut (Thru Neck)	Maple & Walnut (Thru Neck)
Fingerboard:	Rosewood	Ebony
Machine Heads:	Velve Tune BII	Velve Tune BII
Scale:	34"	34"
Pickups:	Super J6	Super PSS / J5S
Controls:	1 Volume 1 Tone 1 Tri Sound	1 Balancer 1 Volume 1 Tone 3 Band EQ B
Bridge:	Accu Cast BII	Accu Cast BII
Control Knobs:	Sure Grip II	Sure Grip II
Hardware:	Chrome	Gold
Finishes:	DS (Dark Stain)	DS (Dark Stain) PW (Polar White) MB (Metallic Black)

MC940: Same as MC924, but Fretless Fingerboard. Finish: DS (Dark Stain)

MC924L: Same as MC924, but Left Hand Model. Finish: DS (Dark Stain)





RB924CS



RB920BS

**ROADSTAR II BASS** DELUXE





## RB924 and RB920

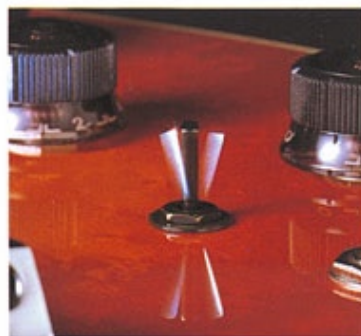
The RB924 and RB920 were created to satisfy the player who wants all of the latest technological features at his disposal. The RB924's highly figured Bird's-Eye Maple / Alder flat top body is finished in black and cream binding. The custom Rock Maple neck features a two octave Rosewood fingerboard for smooth, fast playing. Super P5S and J6 pickup mix levels are controlled through the use of individual balancer that permits the attainment of virtually tone color imaginable. Volume and tone are controlled by two separate Sure Grip II control knobs.

Reduced headstock size, plus new lighter Velve Tune B II machine heads contribute to the RB924's perfectly balanced feel. The RB924 is available in Cherry Sunburst finish.

The RB920 provides all of the same features as the RB924 excepting a standard neck scale and the use of a single Super J6 pickup. The RB920 is available in Brown Sunburst finish.

### TRI-SOUND SELECTOR SWITCH

The J6 pickup is equipped with the Ibanez TRI-SOUND selector switch. Select either humbucking, single or parallel coil operation at the flip of the switch.

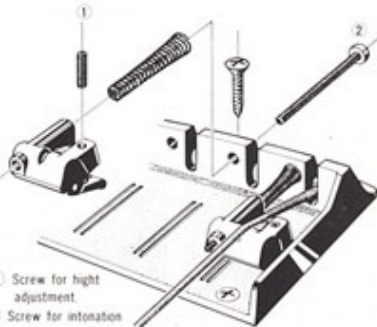


### ACCU CAST B II BRIDGE / TAILPIECE

The Ibanez ACCU CAST B II bridge / tailpiece is a low mass design for full transition of string vibrations to the body. Each string rests firmly on the saddle for maximum sustain and rock steady response even with heavily percussive playing styles. String height is individually adjusted with a single screw.

#### EXPLODED VIEW OF "ACCU-CAST B II"

The "ACCU-CAST B II" is made for the simplicity in adjustment and better transition of string vibration.



1) Screw for height adjustment.

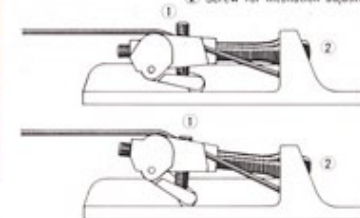
2) Screw for intonation adjustment.

A) The bridge units weight has been reduced lighter bridge.  
B) Utilizing only one screw for height adjustment ... simple, easy, less trouble.

#### SIDE VIEW OF "ACCU-CAST B II" BRIDGE / TAILPIECE

1) Screw for height adjustment.

2) Screw for intonation adjustment.



### CONTROLS

#### RB920

- 1) Volume
- 2) Tone
- 3) Tri Sound Switch



#### RB924

- 1) Pickup Balancer
- 2) Master Volume
- 3) Master Tone
- 4) Tri Sound Switch



Because the Roadstar Bass Series was brought about through close work with many professional musicians, its format is flexible enough to suit just about any style of playing. Roadstar Bases are offered in a number of different models and price ranges, each one individually designed to fulfill a particular need.

	RB924	RB920
Body:	Bird's-eye Maple & Alder	Bird's-eye Maple & Alder
Neck:	Maple w / Rosewood Fingerboard	Maple w / Rosewood Fingerboard
Machine Heads:	Velve Tune B II	Velve Tune B II
Scale:	34"	34"
Pickups:	Super P5S / J6	Super J6
Controls:	1 Balancer 1 Volume 1 Tone 1 Tri Sound	1 Volume 1 Tone 1 Tri Sound
Bridge:	Accu Cast B II	Accu Cast B II
Control Knobs:	Sure Grip II	Sure Grip II
Hardware:	Chrome	Chrome
Finishes:	CS (Cherry Sunburst)	BS (Brown Sunburst)



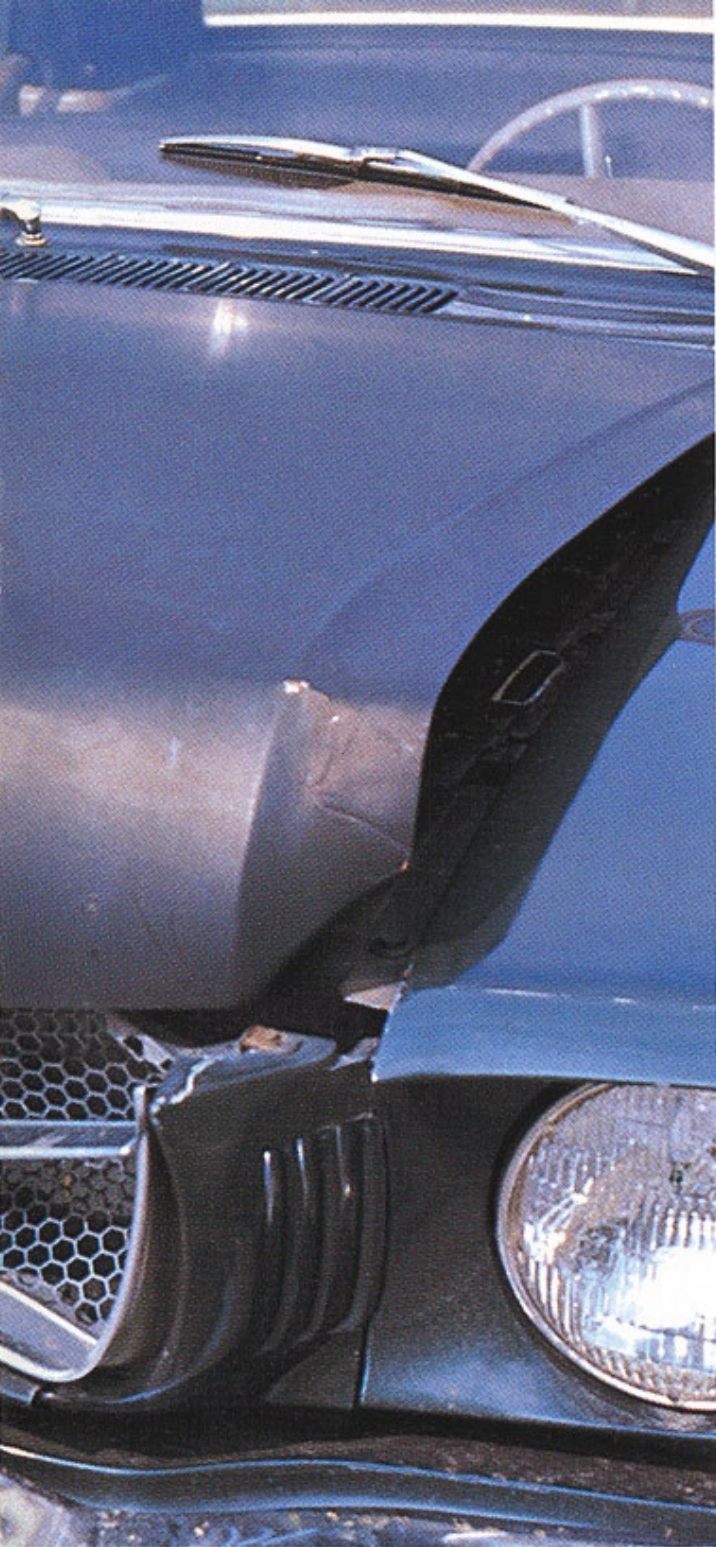


RB820SS

RB840BS

**ROADSTAR II BASS** DELUXE



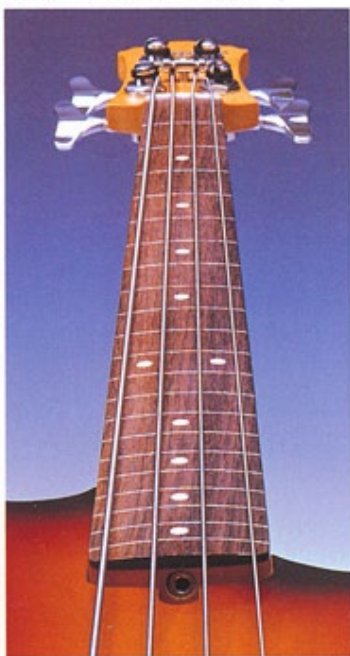


## RB820 and RB840

The RB820 and RB840 basses offer modern styling and contemporary features for the player who demands the latest. The RB820's contoured Alder body is furnished with Super J6 pickups, Dead End strap pins, plus Sure Grip II control knobs that prevent slippage when making fast sound adjustments. The Accu Cast B II bridge provides for easy height adjustment and provides maximum sustain with minimum vibration. The RB820 is available in three finishes including the vibrant new silver smoke. The RB840 is identical to the RB820 but offers the option of a fretless neck. The RB840 is available in rich Brown Sunburst.

## NEW FRETLESS FINGERBOARD

The new Ibanez fretless fingerboard features thin, flush inlays in each fret position, taking the guesswork out of perfect intonation.



## STRING GUIDE

The Ibanez STRING GUIDE is shaped like a round post or spool. This design minimizes friction against the String problem that plagues ordinary string guides. The Ibanez STRING GUIDE assures smooth, effortless tuning.

## DEAD END STRAP POST

The DEAD END strap post ends the nightmare of crashing instruments slipping off the strap post. The unique design of the DEAD END strap post captures the strap without the use of locking systems. Strap attachment or removal is quick and easy.

## SURE GRIP II CONTROL KNOB

The oversized diameter of the SURE GRIP II knob comfortably fits the hand or finger for effortless control and easy violin swelling effects. The ribbed rubber insert has been enlarged for a reliable grip on the top or side of the knob.



RB824MB

## CONTROLS

RB820, RB840

- ① Volume
- ② Tone
- ③ Tri Sound Switch



## RB820

Body:	Alder & Birch
Neck:	Maple w/ Rosewood Fingerboard
Machine Heads:	Velvet Tune B II
Scale:	34"
Pickups:	Super J6
Controls:	1 Volume
	1 Tone
	1 Tri Sound
Bridge:	Accu Cast B II
Control Knobs:	Sure Grip II
Hardware:	Chrome
Finishes:	SS (Silver Smoke)
	BS (Brown Sunburst)
	MB (Metallic Black)

RB840: Same as RB820, but Fretless Fingerboard Finish: BS (Brown Sunburst)





RB600BS

RB720BK

RB620NT

**ROADSTAR II BASS** STANDARD





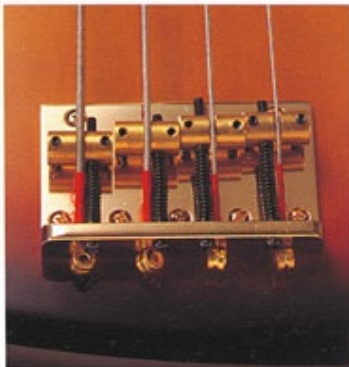
## SUPER P4 PICKUP

If your bass is going to have one pickup, this should be the one. The Super P4 has considerably more output than other standard bass pickups, with a round and full sound and plenty of punch.



## BRASS HARDWARE

RB720 features a heavy machined brass bridge/tailpiece with individual brass saddles. The saddles are adjustable in both height and intonation length. The knurled volume and tone knobs are also solid brass.



## RB600

This 32" scale, lightweight bass is designed for the bass player who needs mobility on stage. The slightly shorter scale makes fast solos easier and the single Super P4 pickup punches out a clean and round sound. The RB600 weighs approximately two pounds less than a standard bass, a feature you'll appreciate when the fourth set rolls around.



## CONTROLS

RB600, RB620, RB720

- ① Volume
- ② Tone



Ibanez designers examined exactly what bassists wanted most in their instrument, took the results and came up with the new, surprisingly affordable Roadstar Standard models. These basses offer quality and features comparable to other basses costing nearly twice as much.

The RB720's traditionally sculpted basswood body features a cutaway back for long hours of playing comfort and is equipped with Super P4 pickups, for extra full bass sound. The heavy duty Brass B I bridge is free from noise due to vibrations or loose parts and provides maximum sustain and tonality. The RB720 is available in a choice of three finishes-Black, Burgundy, and Brown Sunburst.

The RB620 offers a choice of Solid Ash or laminated wood contoured body and features Super P4 pickups, plus the Roadstar custom one piece Maple neck. Velveteen B II machine heads, Sure Grip II control knobs, and a newly designed, rounded string guide for reduced friction during tuning highlight the RB620's feature list. The RB620 is offered in two traditional finishes - Brown Sunburst and Natural.

The RB600 is unique to the Roadstar line in that it is the only model to offer a 32" scale neck. Its smaller body and neck size make it perfect for beginners, or those who prefer a more "guitar-like" feel to their bass. Features include a custom built one piece Maple neck, Velveteen B II machines, plus Super P4 pickups. The RB600's body is constructed of laminated wood and is available in a Brown Sunburst finish.

	RB600	RB620	RB720
Body:	Laminated Wood	Solid Ash or Laminated Wood	Basswood
Neck:	Maple 1 pc.	Maple 1 pc.	Maple 1 pc.
Machine Heads:	Velveteen B II	Velveteen B II	Velveteen B II
Scale:	32"	34"	34"
Pickups:	Super P4	Super P4	Super P4
Controls:	1 Volume 1 Tone	1 Volume 1 Tone	1 Volume 1 Tone
Bridge:	Standard	Standard	Brass B I
Control Knobs:	Sure Grip II	Sure Grip II	Sure Grip II
Hardware:	Chrome	Chrome	Chrome
Finishes:	BS (Brown Sunburst)	BS (Brown Sunburst) NT (Natural)	BS (Brown Sunburst) BK (Black) BY (Burgundy)





Tomorrow's Name In Guitars  
**Ibanez**

Ibanez guitars are sold and serviced by

COPYRIGHT 1983 APR 83021 50,000 PRINTED IN JAPAN